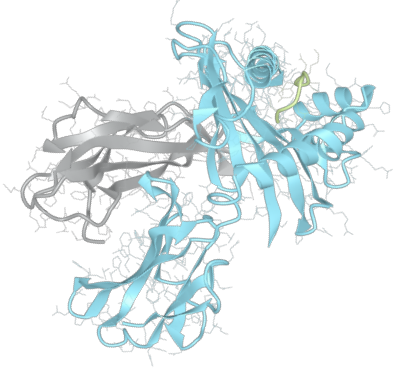


Product datasheet

sHLA-A*30:01bio

A*3001, A3001, A*30, A30, A30



Serological Name	A30
Peptide Load	Endogenous
Modification	Unmodified
Conjugation	Biotin
SKU	A3001bio

Product Description

Allele Name	A*30:01 B2m
HLA Class	HLA Class I
HLA Gene Locus	HLA-A
Alternative Allele Name A Chain	A*3001, A3001, A*30, A30, A30
Alternative Allele Name B Chain	-
Description	Recombinant, truncated Class I soluble Human Leukocyte Antigen (sHLA), naturally folded and glycosylated, loaded with endogenous peptides.
Serological Name	A30
Serological Split	A19
Bw4/Bw6 Assignment	-
Bw4/Bw6 Sequence	-
Allele Frequency [World Population]	
A chain	2.7%
B chain	-

Associated products

[A3001](#)
[A3001pe](#)

Product Specification

Product name	HLA-A*30:01bio
HLA Species	Human
Host Cell Line Species	Human
Clone Designation	D10D11
Tail Specification	VLDL
Peptide Load	Endogenous
Modification	Unmodified
Conjugation	Biotin
Complexity	Monomer
Protein Format	Recombinant, truncated, soluble, non-modified, biotinylated, endogenously loaded
Storage Temperature	4 °C (This product should be stored undiluted)
Form	Liquid
Concentration	300.0 µg/µl
Formulation	PBS/0.02% Sodium Azide
pH	7.4
Purification Method	Affinity Chromatography
Grade	Research Use Only [RUO]
Authentication Verification	Sequence Based Typing

Protein Sequences

Alpha Chain Sequence	<p>GSHSMRYFST SVSRPGSGEP RFIAVGYVDD TQFVRFSDSA ASQRMEPRAP WIEQERPEYW DQETRNVKAQ SQTDRVDLGT LRGYYNQSEA GSHTIQIMYG CDVGS DGRFL RGYEQHAYDG KDYIALNEDL RSWTAADMAA QITQRKWEAA RWAEQLRAYL EGTTCVEWLR R YLENGKETLQ RTDPPKTHMT HHPISDHEAT LRCWALGFYP AEITLTWQRD GEDQTQDTEL VETRPAGDGT FQKWA AVVVP SGEEQRYTCH VQHEGLPKPL TLRVSVSTDD DLA</p>
Beta Chain Sequence	<p>IQRTPKIQVY SRHPAENGKS NFLNCYVSGF HPSDIEVDLL KNGERIEKVE HSDLSFSKDW SFYLLYYTEF TPTEKDEYAC RVNHVTL SQP KIVKWDRDM</p>

Related Products

[A3002bio](#)
[A0201bio](#)
[A0301bio](#)
[B0702bio](#)

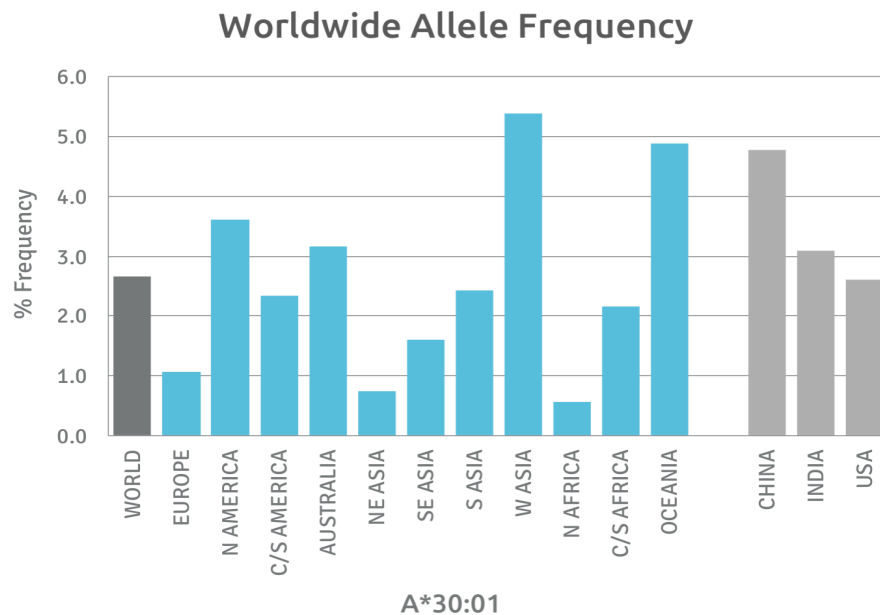
Applications

HLA Sandwich ELISAs
HLA Direct ELISAs
HLA-Sera Antibody Assays
HLA Controls in ELISA Assays
HLA Assay Standards
HLA Blocking Assays
HLA Neutralizing Assays
HLA Competition Assays
HLA Bead Assays
HLA Immunization Procedures

Recommended Antibodies

W6/32
Anti-B2m

Allele Frequency



Please note:

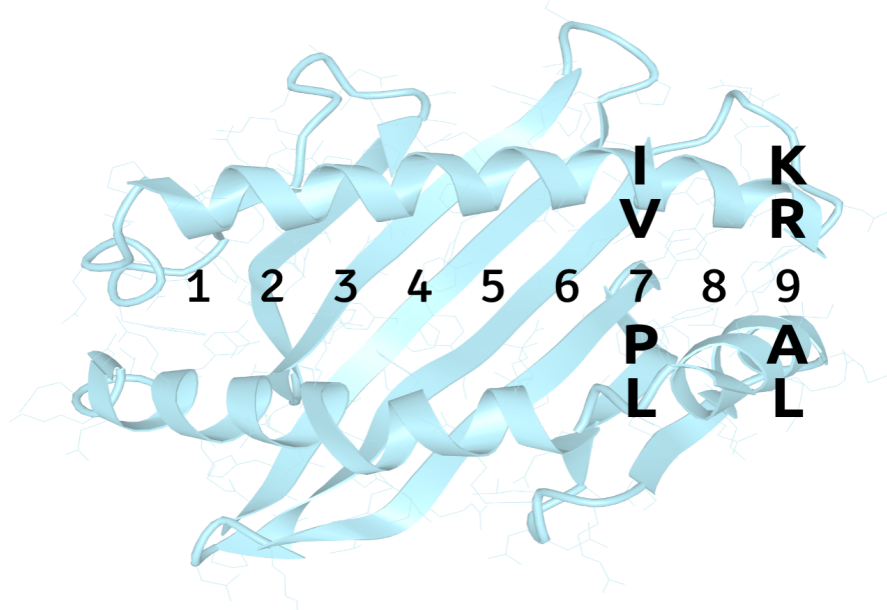
ALL PRODUCTS ARE FOR RESEARCH USE ONLY. NOT FOR COMMERCIAL USE IN DIAGNOSTIC PROCEDURES.
For more information, please visit our Policies section on our website. For licensing inquiries, please contact

licensing@hlaprotein.com

 HLA Protein
PURE PROTEIN, LLC

Motif

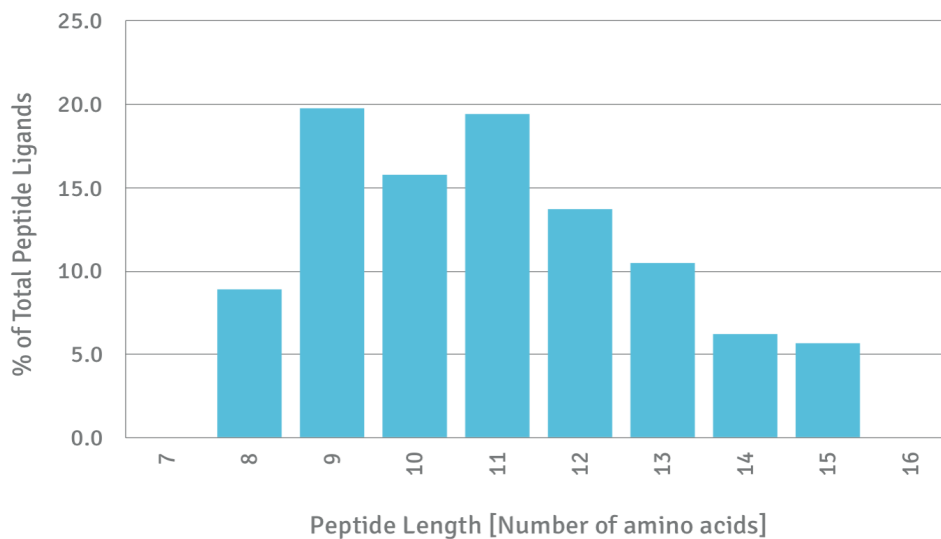
A*30:01 BINDING MOTIF



Length Distribution

HLA Length Distribution

A*30:01



Please note:

ALL PRODUCTS ARE FOR RESEARCH USE ONLY. NOT FOR COMMERCIAL USE IN DIAGNOSTIC PROCEDURES.

For more information, please visit our Policies section on our website. For licensing inquiries, please contact

licensing@hlaprotein.com

